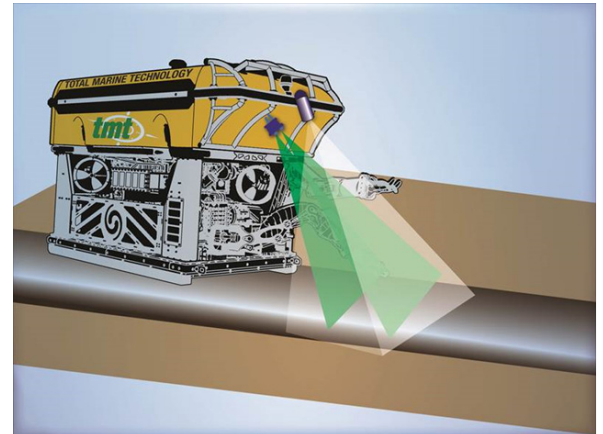


CATEGORY: Subsea Smart Tool

TMT Subsea Laser

Engineered Tooling Solutions *FAST*



The Silky Shark Subsea Laser is the newest laser from Imenco. The Subsea Laser has an output of 50mW, with a very uniform sharp line and a fan angle of 67° in water, 90° in air.

Rated to operate at 6,000msw, the Laser is manufactured with a Titanium housing and a Sapphire lens, offering proven corrosion resistance for the subsea environment.

By using two (2) lasers in a fixed bracket fabricated by TMT and calibrated at a set distance, accurate measurements from video images is possible. The dual mounted laser system is ideal for use in pipeline inspections and structure measurements.

Features:

- Rugged construction
- Compact
- Titanium housing
- Sapphire lens

Specifications:

- | | |
|----------------------|----------------------|
| • Dimensions | 69 x248mm |
| • Weight in Water | 1.1kg |
| • Power | 24V (12 – 32) / 7.5W |
| • Laser Output | 50mW |
| • Wave Length | 518nm |
| • Standard Connector | SEACON 5506-1508 |
| • Depth Rating | 6000msw |

Specifications subject to change without notice. All rights reserved.